
Operation Example: Rotary Axis Marking (Optional)

Step 1: Click “File - Import” will appear the Import dialogue box.

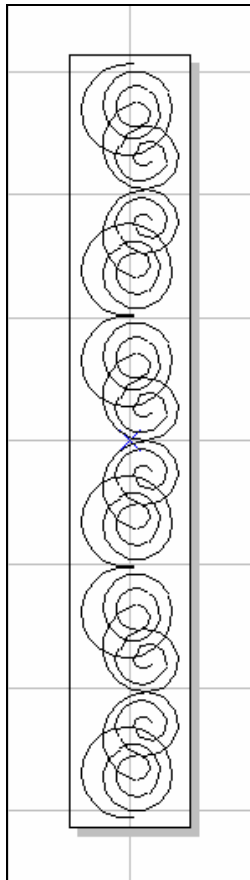
Step 2: Select the file you want to import then click “Open” button.

Step 3: Edit the object properties in Property Table:

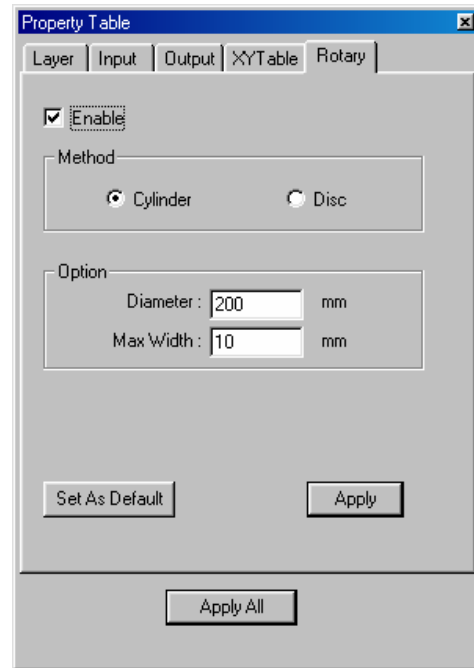
(1) Frame/fill – Adjust the color of the border and interior shading of a selected object.

(2) Click  button on the Tool Bar to move the object to the center.

Step 4: Click the layer of the object in the Object Browser and go to the Rotary page of the Property Table for parameter settings.



- (1) **Enable:** Enable the rotary axis function.
- (2) **Mode:** the rotary axis mode.
Cylinder: the cylinder mode.
Disc: the disc mode.
- (3) **Parameter:** parameter settings
 - **Diameter:** the double distance between the object to the axle center.
 - **Max Width:** the suitable marking range, the value should be changed depend on the diameter.



Step 5: Cancel the object selection and go to the motor setting page of the Property Table to do the Motor Setup.

- (1) Select the axis you want:

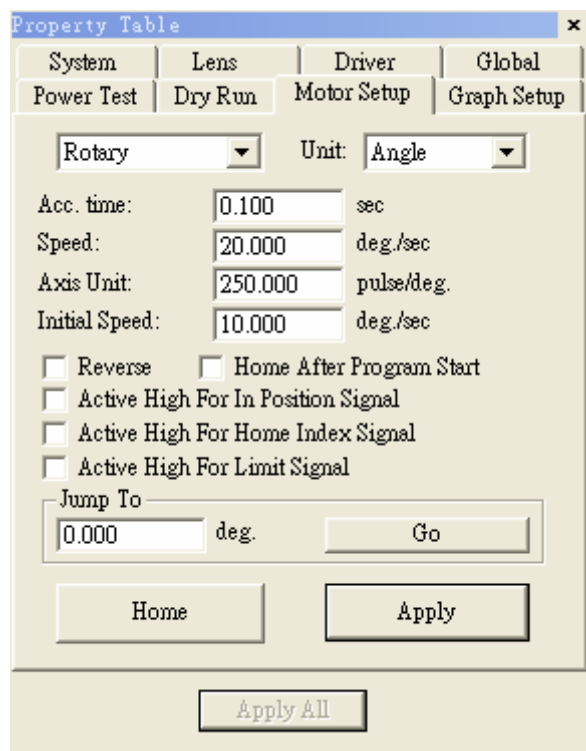
Rotary or X-Axis or Y-Axis or Z-Axis

Unit: length or degree

Acc. Time: the time for Rotary Axis to reach the speed you want. If the value is 5 sec and the speed is 10 degree/sec that means the rotary axis will reach 10 degree/sec in 5 seconds.

Speed: the speed of Rotary Axis. If the value is 10 degree/sec that means the Rotary Axis turns 10 degree per second.

Axis Unit: the pulse amount needed for one circle rotating



If the spec. of the motor is 20000 pulses; the value should be set as 20000 pulses/REV

Start Speed: Start speed of the motor

Reverse: The motor turns in the reverse direction.

Homing after program start: Automatically go home after program start

In Position High: Set the signal of In Position as High

Home Index High: Set the signal of Home Index as High

Limit High: Set the signal of Limit as High

Jump to: Move to the assigned position

Home: Do the Home action immediately

Step 6: Marking Parameter Setting – Set the mark cycle to Single Pass.

Step 7: Click "Execute - Mark" will appear the Execute dialogue box; and then click "Exec" button, the current status of each Auto Text will be displayed.